

# What Does Java Security See When It Looks in the Mirror?

Lead to Market talked to security professionals at more than 50 large enterprise companies that use Java to assess the state of Java security. They may be overestimating how safe their Java estates are.



## WHAT SECURITY PROFESSIONALS SEE

### Confident

**100%** of the security professionals surveyed say they have total confidence in their companies' Java security

### Prepared

**43%** report total faith in their security tools



### Active

**10%** say their biggest challenge is being unable to use their tools in production

### Trusting

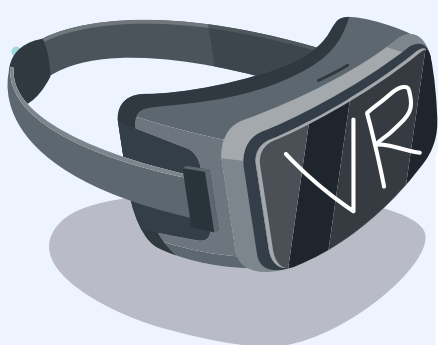
**93%** say Java application developers have adequate security skills and expertise

## HOW SECURITY PROFESSIONALS LOOK

### Disorganized

**23%** have not patched or don't know if they have patched Log4j

**95%** of Java programs use Log4j directly or indirectly (Check Point)



### Myopic

**20%** say libraries and components are the most concerning source of CVEs

**65%** say managing libraries is not becoming more difficult

**98%** of software uses open-source components, and third-party dependencies and development pipelines are the most vulnerable part of the supply chain

### Naïve

**93%** say Java application developers have adequate security skills and expertise

**74%** say they have software bills of material (SBOMs) for most or all third-party applications

**100%** say they trust the accuracy of third-party applications

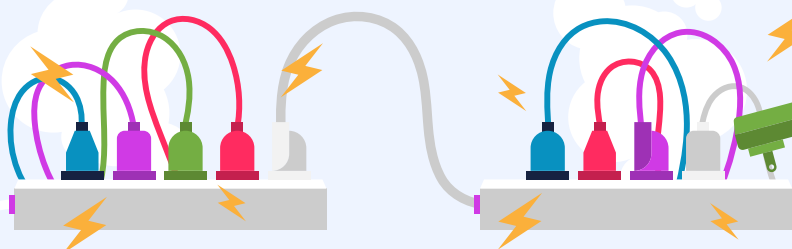
**47%** say third-party applications are the most concerning source of CVEs



### Exhausted

**85%** say they have alert or dashboard fatigue

**10%** have ignored at least one alert within the last year



## HOW AZUL CAN HELP SECURITY PROFESSIONALS IMPROVE



Monitor in production



Continuously monitor all Java applications



Eliminate false positives



Check against an updated Java-specific CVE database



Eliminate performance penalties



Gain historical traceability for focused forensics

### Read the Full Report

Read the full survey report and review all the insights gained from in-depth interviews with 60 large enterprises by JBF Research. [Read the report](#)

### About azul

Azul Vulnerability Detection continuously detects known vulnerabilities in your Java applications in production. Learn more at [azul.com/products/vulnerability-detection](https://azul.com/products/vulnerability-detection).

Azul dramatically improves the performance of Java applications while cutting cloud costs by up to 50 percent. Learn more at [azul.com](https://azul.com).

### Contact Azul

385 Moffett Park Drive, Suite 115  
Sunnyvale, CA 94089  
USA +1.650.230.6500  
[www.azul.com](https://www.azul.com)